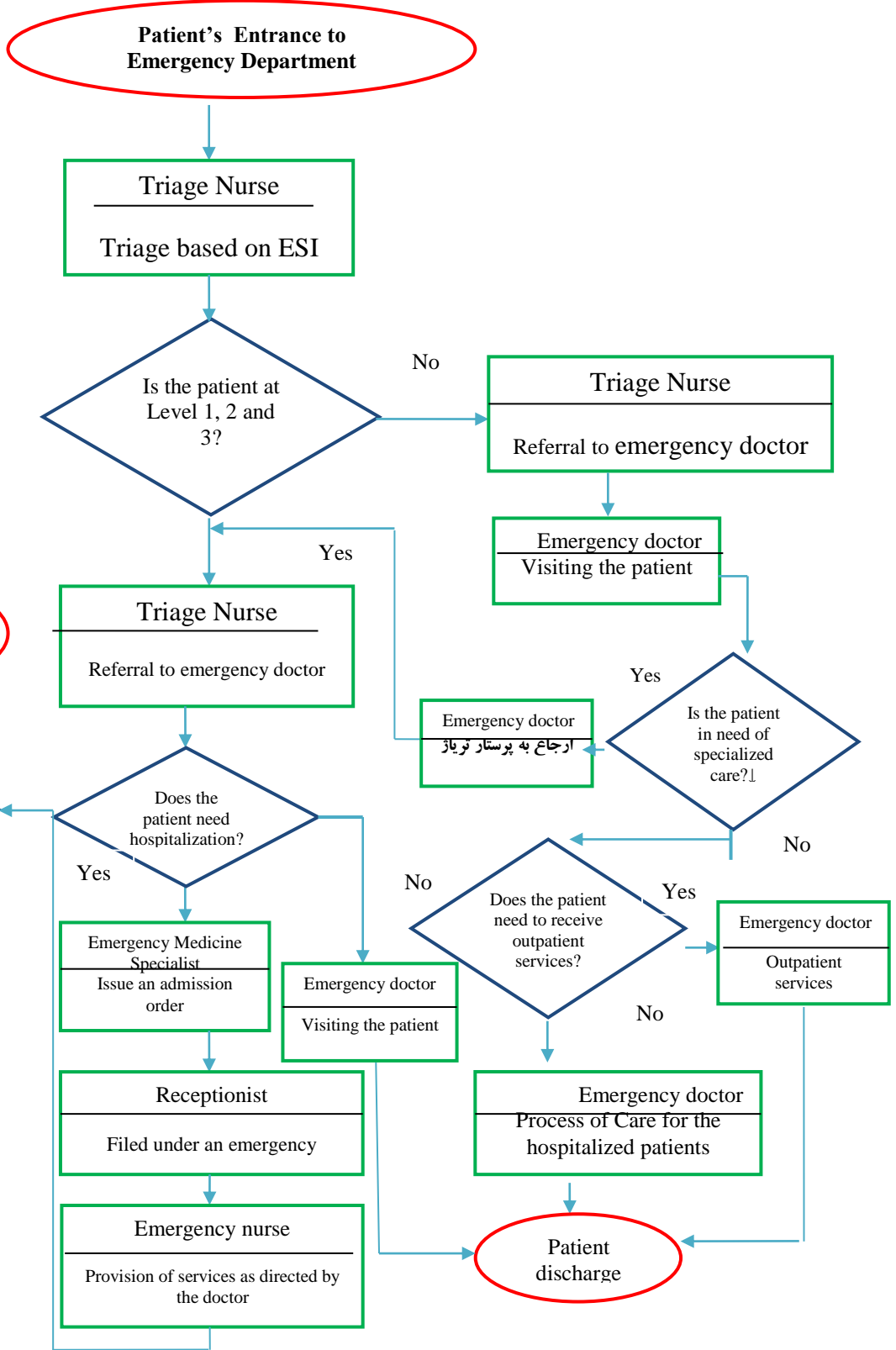




Admission Process (emergency)



The process of patient admission in the section

Does the patient need hospitalization?

Receptionist
Patient tips to the discharge unit

Patient discharge

Triage Nurse
Referral to emergency doctor

Does the patient need hospitalization?

Emergency Medicine Specialist
Issue an admission order

Receptionist
Filed under an emergency

Emergency nurse
Provision of services as directed by the doctor

Triage Nurse
Referral to emergency doctor

Emergency doctor
Visiting the patient

Is the patient in need of specialized care?

Emergency doctor
ارجاع به پرستار تریاژ

Does the patient need to receive outpatient services?

Emergency doctor
Outpatient services

Emergency doctor
Process of Care for the hospitalized patients

Patient discharge